

Patrice: The Movie — Film Screening and Discussion

Know Before You Go Guide

DATE

Tuesday, March 25, 2025

TIME

4:00 p.m. - 8:00 p.m. (Doors open at 4:00 p.m.)

Film starts at 5:00 p.m. (Panel discussion immediately follows film)

LOCATION

Tyler School of Art and Architecture

2001 N. 13th Street, Philadelphia, PA 19122

Room ARCH 104

PLUS

- Light refreshments will be served. Vegan and gluten free options available.
- Panel discussion after the movie with director and cast.
- Free event, Registration required

Register using the link or QR code below: [Register for Patrice: The Movie](#)



About the Film:

- Content Note: Sexuality, marriage, ableism
- Film is intended for all ages

“Patrice: The Movie is a documentary rom com about the next phase of marriage equality: Disability.” Patrice is an independent, dynamic person living with cerebral palsy. With director and long-time friend, Ted Passon, Patrice artistically shows scenes from her life and loving relationship with her partner, Garry. Throughout this playful film, we see the struggles that Patrice went through to get the house, the job, and the life that she now fights to keep.”

Event Description

Join us for light refreshments, film screening, and panel discussion featuring Patrice, her partner Garry, and film director, Tedd Passon. Panel moderated by Izzy Kaufman, MEd., Sexuality Educator and Assistive Technology Program Coordinator at the Institute on Disabilities.

This event is hosted by the Institute on Disabilities at Temple University and cosponsored by Disability Pride Pennsylvania, Liberty Resources Inc., Temple Disability Resources and Services, and 2025 Sex Ed Week. criptions, ramp entrances with automatic door openers.

Accessibility Information

- ASL, CART, Audio Descriptions, ramp entrances with automatic door openers.
- Entrance to use before 6pm: The entrance to Tyler School of Architecture is on 13th Street. This is the closest entrance to the event. Please bring your ID. A security guard will ask you to sign in.
- Entrance to use after 6pm: The main entrance to Tyler School of Art and Architecture is on Norris Street. Please bring your ID. A security guard will ask you to sign in.
- Accessible restrooms available. The doors are not automatic. Volunteers will be available to open the door.

- The grass outside the 13th street entrance is available for service animals to relieve themselves.

Event Location

Tyler School of Art and Architecture
2001 N. 13th Street,
Philadelphia, PA 19122
Room: Arch 104 [View on Google Maps](#)

Accessing the Building

Norris Street Entrance

The main entrance is located on Norris Street. If you arrive **after 6pm**, please use this entrance.

The **Norris Street entrance** to Tyler is considered the main entrance and is on **Norris Street between 12th and 13th Streets**. Entering on the Norris Street, there is a ramp for easy access on the left side of the entrance (closer to 13th St.) Once in front of doors there is an access button to press and the first doors will open, once inside, there is another access button to press to open the second set of doors.



Image Description: The Norris Street entrance to Tyler, a building with glass windows. There is a cement ramp leading up to the building entrance on the left side and cement stairs.

13th Street Entrance

Please use the 13th Street entrance **before 6pm**. It is closer to the room in which the event will be held.

The **13th Street entrance** to Tyler is at 2001 N. 13th Street (between Norris & Diamond Streets). Access via ramp on the right side. Once at the door there is an access button to press that opens both the inside and outside doors. This entrance is closest to the event space inside the building and may be preferred for guests who prefer a shorter route to the event space.



Image Description: A concrete access ramp leads upward towards the building entrance. The entrance is a glass door with an automatic button to the right side at the top of the ramp.



Image Description: Inside Arch 104, set up with black, portable chairs arranged in rows facing a lecture podium.

Access Notes:

People are free to come and go during the event. If you need to leave and return after 6pm, you will need to re-enter the building through the Norris Street entrance. A volunteer can assist if needed.

Restrooms

Accessible restrooms are located just outside the event room.

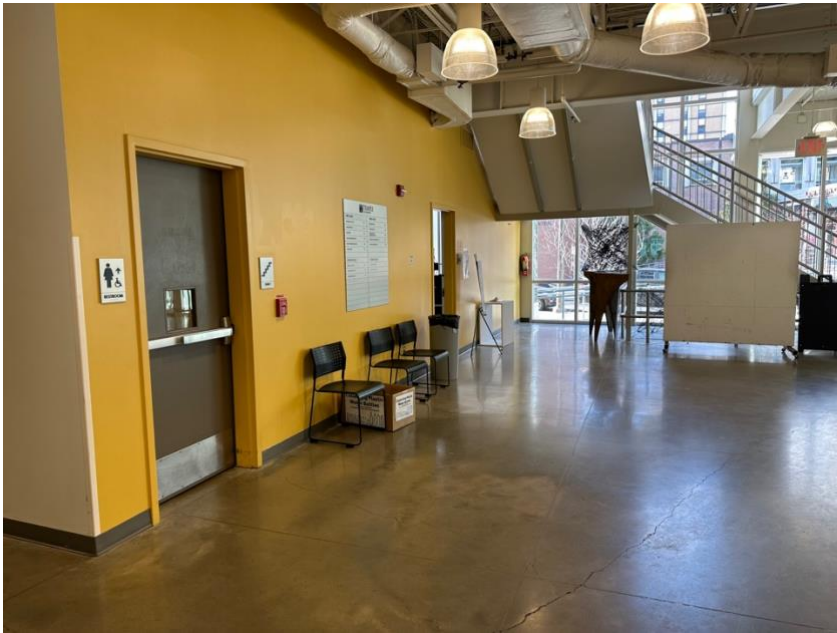


Image Descriptions: Accessible restrooms located across the hall from Arch Room 104.

Public Transportation



Directions to Tyler School of Art and Architecture with public transportation can be routed using SEPTA's (Southeastern Pennsylvania Transportation Authority) website: (<https://www.septa.org/>)
For more on SEPTA's accessibility: <https://www.septa.org/accessibility/>

The following transit lines have routes that pass near Tyler School of Art and Architecture:



- Bus: 4, 16, 23 and BSO



- Train: AIRPORT, CHESTNUT HILL EAST, WARMINSTER and WEST TRENTON



- Subway: Broad Street Line: Susquehanna-Dauphin is the closest stop and is an ADA accessible station with two elevators. The Cecil B. Moore station is also nearby and ADA accessible.